

Railroads

12

DUXBURY CLIPPER ANNIVERSARY ISSUE, Thursday, May 8, 1975

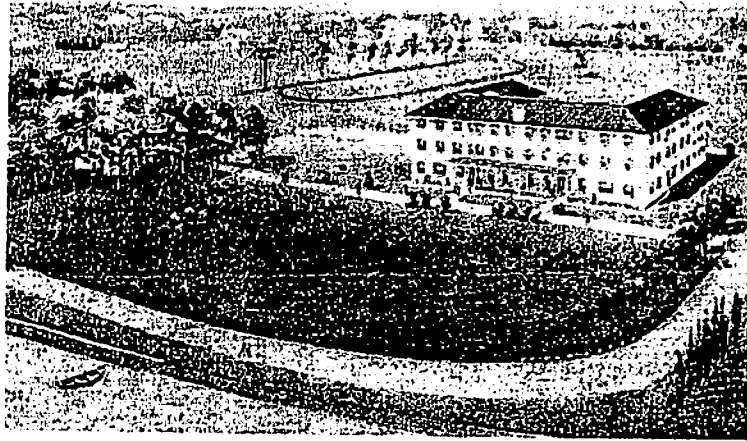


Some derbied dandies and friends enjoying intermission during annual town meeting outside Town Hall. Not a woman in the group. Why? They were not voting taxpayers, you see.

SOUTH DUXBURY RAILROAD STATION



The So. Duxbury Station was at So. Station and Depot streets. Across the street you can see the roof of the present Carpenter Shop. Years ago it was a Chevrolet garage. Commuters on Duxbury trains going to Boston passed the time with "train hearts" and, no doubt, "train bridge."



[Here are the 1916 graduates of the Point School on Cedar St., now Manion Hall. The teacher is Miss Devereaux.] Back row, l to r, Verna McNaught, Bertha Chubbuck, Frances Smith, Isabel Hunt, Ethel Noyes, Roger Spaulding, Elliott Spaulding, Bob Merry. Front row, l to r, Mildred Chandler, Florence Merry, Winona Merry, Myrtle Chandler, Beatrice Redmond, Henry Merry, Clifton Chandler, Millard Chubbuck.